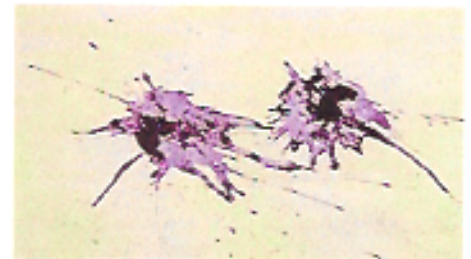




## Relationship #23



Once fertilization has occurred and the plant has developed seeds, the seeds must be moved away from the mother plant to germinate and grow into new individuals. If the seeds just drop near the mother plant, developing seedlings and new plants will compete with the mother plant for space and nutrients.

A mechanism higher plants have evolved to disperse their seeds are berries and fruits such as the raspberries in the photograph above left. The berries or fruits are eaten by birds or mammals.

The seeds within the fruit are resistant to the acids and enzymes present in the digestive system of the consuming organism. The berry or fruit-eating organism essentially transports the seeds to a new location before they are eliminated through defecation.

The birds and mammals derive a food benefit by eating the berries and fruits. The plant, in turn, disperses its seeds.