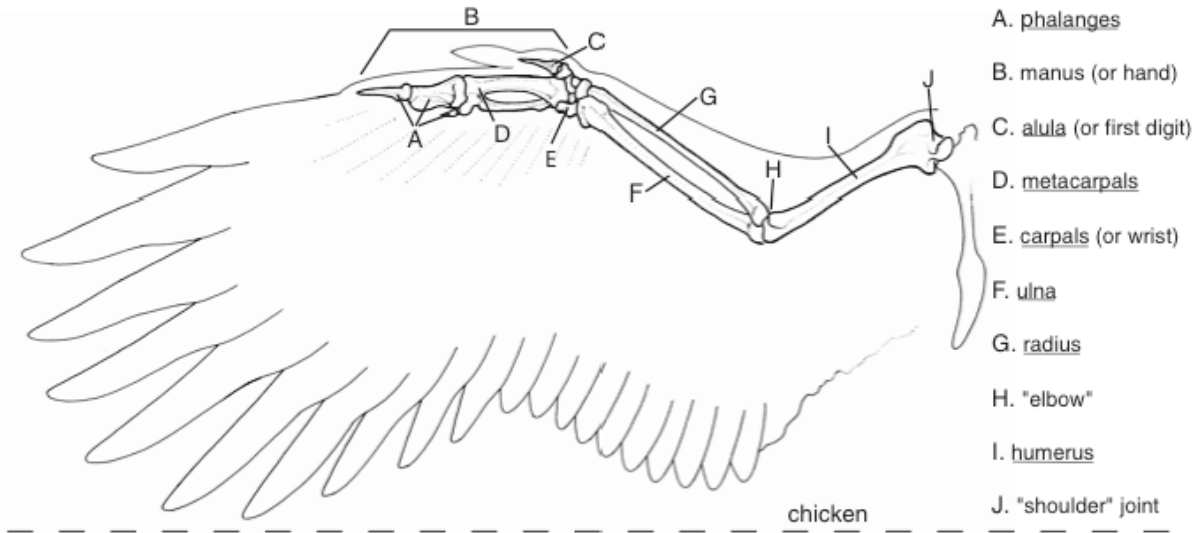
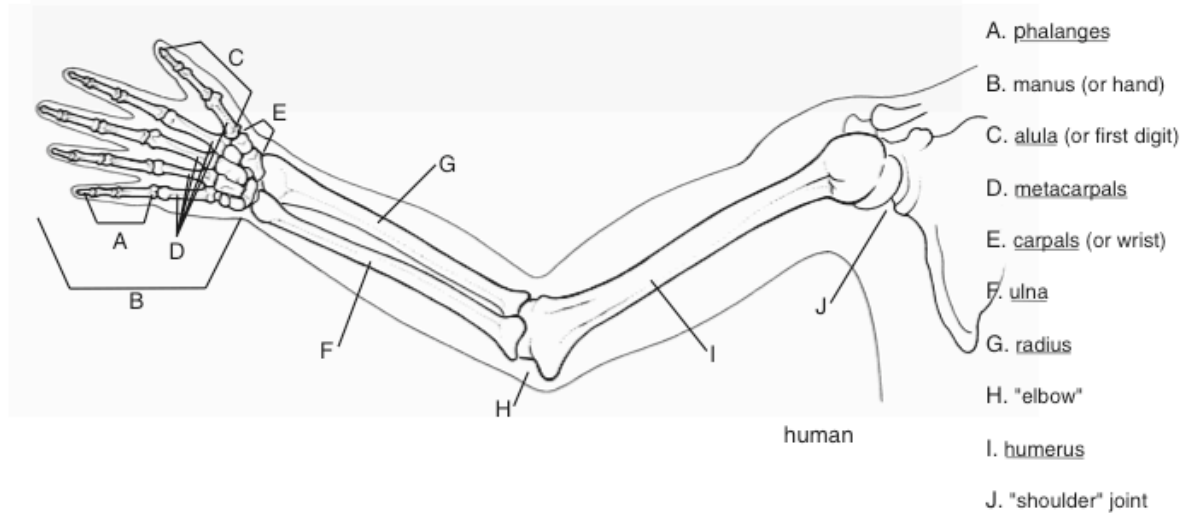


Evolutionary biology is a subfield of biology concerned with the origin and descent of species, as well as their change over time, i.e. their evolution.

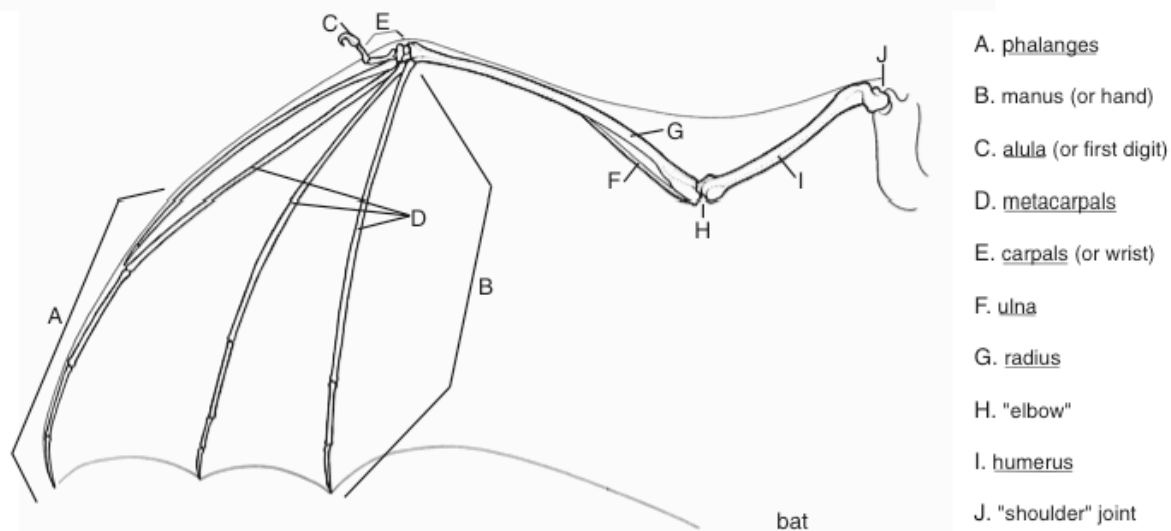
14. Locate the bones listed in the **bird wing** diagram. Using different colored pencils, color the bones and corresponding bone names.



15. Locate the bones listed in the **human hand**. Use the same color-coding to color these bones.



16. Locate the bones in the **bat wing**. Use the same color-coding to color these bones.



17. In your own words describe the similarities between these three limbs.